

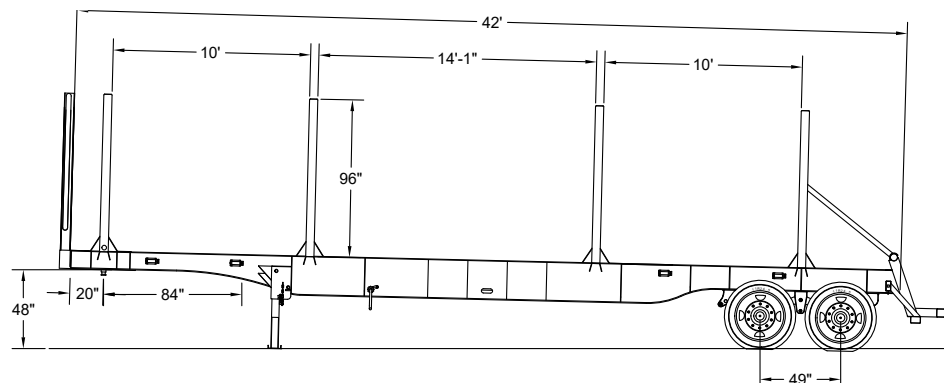
Carter



LT40-L HD · Straight Frame Logging Trailer

PITTS Trailers®
Since 1976

APPROVED SOURCEWELL SUPPLIER



PITTS TRAILERS IS A SOURCEWELL APPROVED SUPPLIER

Since 1976, Pitts has built trailers for the construction, commercial and forestry markets tough enough for every job and priced to make you profitable.

Pitts Trailers is the world's largest and only complete line forestry manufacturer, moving the forestry transportation market forward with its log trailers, open and closed top chip vans, moving floor vans, and hydraulic elevating trailers with crawler suspension for knuckle boom loaders.



Sourcewell

Awarded Contract

Contract # 092922-PTT

LT40-L HD Standard Features



WEIGHT

11,490 lbs +/- 3%

MAINFRAMES

Heavy Duty 22" Fabricated Beam, T-1 Steel - Straight Frame Design

AXLES

(2) 25,000 lb Capacity, 77 1/2" Track

Anti Lock Brake System

16.5" x 7" Air Brakes

Type 30/30 Brake Chambers

SUSPENSION

Hutch 9700 3 Point Heavy Duty 4 Leaf Steel Spring

WHEELS

10 Hole Unimount

TIRES

11R24.5 Radials

BOLSTERS

Heavy Duty 4" x 10" Tubing

STANDARDS

Heavy Duty 5" x 5" Tubing

LANDING GEAR

Heavy Duty Patented Lock N' Go Landing Gear (Double Locking Landing Gear Pin)

BUMPER

Heavy Duty Bumper W/Full Width Grapple Bar

AIR TANK

Covered w/ Channel Iron

WINCHES

With 30' Nylon Straps and Handles

PROTECTIVE COATING

High quality 2-part black acrylic urethane

High quality 2-part primer

White blasted and cleaned prior to painting

OPTIONS

Greaseless Revolver Coupling System

Aluminum Wheels

Grapple Bar

Vulcan or SI Electronic Scales (Air Scale Option

Also Available)

Single Point Spring Suspension (w/ Lift Axle Option)

Air Ride Suspension (w/ Lift Axle Option)

10'2" Spread Option w/ Air Ride Suspension

Heavy Duty Headboard

Slidable Bolsters

Disc Brakes

11R22.5 Radial Tires

Custom Designs Available

Note: All specifications are subject to change without prior notification. All dimensions and weights are approximate. Trailers pictured in this brochure may feature optional equipment. Axle placement and legal load ratings are dependent upon federal, state, and local regulations, GAWR and tire ratings. Copyright © 2019 Pitts Enterprises, Inc. (published). All rights reserved.

CARTERMACHINERY.COM · 1330 Lynchburg Turnpike · Salem, VA · 24153 · 800-768-4200

